

OPEN 7 DAYS
A WEEK

Harpers & Co

Tel: 01322 524425
www.harpersandco.com



Sundridge Close, Dartford, DA1 1XD

Offers in excess of £290,000

Harpers & Co are delighted to offer this spacious and well located 2 bedroom semi detached bungalow in the sought after Sundridge Road, in what is a secluded bungalow location.

This property offers ample scope for those wanting to stamp their own mark on it and also offers huge scope to extend to the side as there is a large detached garage.

***2 BEDROOM BUNGALOW* *CHAIN FREE* *OFF ROAD PARKING*
DETACHED GARAGE *GAS CENTRAL HEATING*
*LARGE RECEPTION/DINING ROOM***

EPC rating 52 (E)

VIEWING HIGHLY RECOMMENDED

Sundridge Close, Dartford, DA1 1XD

Spacious 2 bedroom semi detached bungalow with detached garage in secluded sought after cul de sac location.

VIEWING HIGHLY RECOMMENDED

- Front Garden:** 25ft x 20ft Mainly laid to lawn with attractive borders and shrubs, brick paved driveway.
- Hallway:** 1.7m (5.5') x 1.6m (5.2') Tiled porch entrance, double timber hardwood door with glass inserts, pine laminate flooring throughout, wall mounted radiator, light to ceiling, smoke alarm, access to loft hatch.
- Lounge:** 7.7m (25.2') x 3.5m (11.5') Pine effect laminate flooring throughout, coving, partial skirting, multiple plug points throughout, chandelier to ceiling with ceiling rose, assorted wall lighting, dado rail, cast iron feature fireplace with black marble hearth and oak mantle, wall shelf, 3 x radiators, UPVC door to rear garden.
- Kitchen:** 6.0m (19.6') x 2.5m (8.2') Fully tiled flooring throughout, selection of wall mounted and floor mounted ash style kitchen units, grey marble effect worktops, chrome basin and mixer taps with draining board, partially tiled walls, 2 x spotlight clusters, multiple plug points throughout, blind to rear double glazed UPVC double glazed window, 4 ring gas hob, electric oven, integrated extractor fan, boiler (untested), wall mounted thermostat, UPVC window above sink with side views.
- Master Bedroom:** 4.2m (13.7') x 3.1m (10.1') Pine laminate flooring throughout, partial skirting, coving, pendant light to ceiling, metal windows with leaded light inserts, fitted wardrobes,
- Bedroom 2:** 3.6m (11.8') x 2.6m (8.5') Pine laminate effect flooring throughout, partial skirting, dado rail, pendant light to ceiling with ceiling rose, metal windows with leaded light inserts, 1 x radiator, multiple plug points throughout.
- Bathroom:** 2.2m (7.2') x 2.0m (6.5') Vinyl hard wear flooring throughout, assisted shower enclosure, double glazed metal window with blind, 1 x radiator with TRV valve, low level W/C, low level basin, wall mounted mirror, extractor fan, curtain rail.
- Garden:** Mainly laid to lawn with concrete patio areas and bricked areas, some borders and conifers and shrubs to rear. Shed to the rear, scope to extend.
- Harpers & Co**
Special Remarks: We urge early viewing to this excellent property as it is a blank canvas offering lots of space and the opportunity to expand.

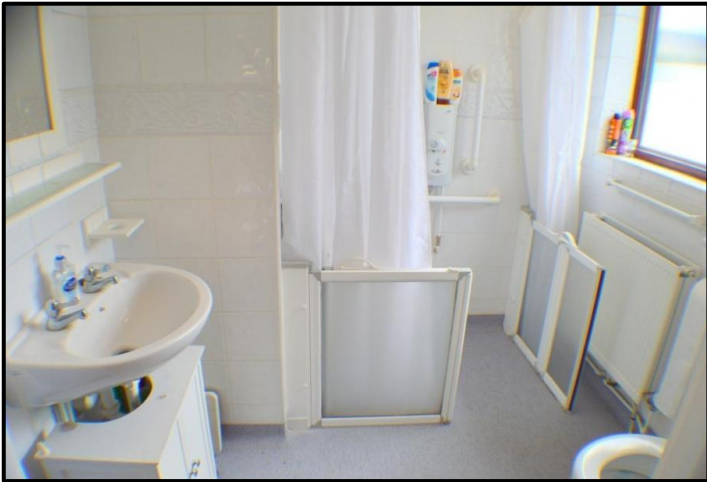
Estate Agents Commercial Agents Lettings Chartered Surveyors Valuers Insurance

Open 7 days a week

Harpers House, 8 Bexley High Street, Bexley, DA5 1AD

Tel: 01322 524425 Fax: 01322 559500

www.harpersandco.com info@harpersandco.com

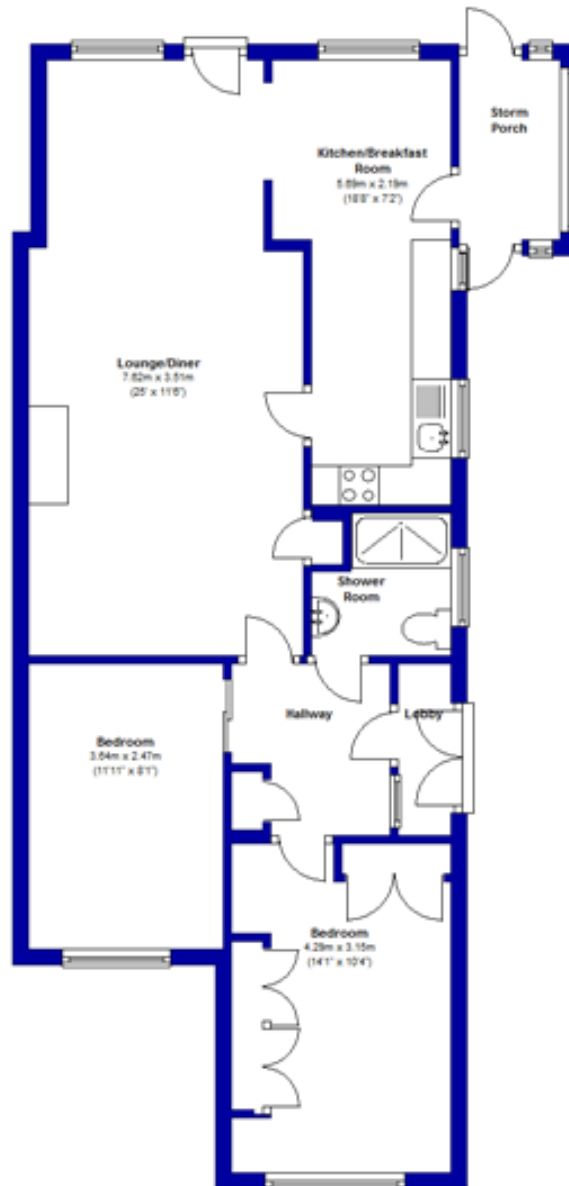


THE PROPERTY MISDESCRIPTIONS ACT 1991

The Agent has not tested any apparatus, equipment, fixtures and fittings or services and so cannot verify that they are in working order or fit for the purpose. A Buyer is advised to obtain verification from their Solicitor or Surveyor.

References to the Tenure of a Property are based on information supplied by the Seller. The Agent has not had sight of the title documents. A Buyer is advised to obtain verification from their Solicitor.

Ground Floor



Estate Agents Commercial Agents Lettings Chartered Surveyors Valuers Insurance

Open 7 days a week

Harpers House, 8 Bexley High Street, Bexley, DA5 1AD

Tel: 01322 524425 Fax: 01322 559500

www.harpersandco.com info@harpersandco.com